



Kara Welding & Cutting's
Fields of Activities

Fields of Activities

- Steel Structures Equipment
- Vessel Equipment
- Special Equipment
- Steel making
- Power plants



صنایع جوش و برش کارا
Kara Welding & Cutting

www.karasazeh.com



Kara Knowledge Enterprise Industries Group



Kara Sazeh Kimia Co.



Welding & Cutting Equipment



KARA Technology



Kara
Knowledge Enterprise Industries Group



Product Based Company:

- Design and Manufacturing
- Welding, Cutting, and Machining

Kara Welding & Cutting Equipment



Automation:

- Software
- CNC programming

Kara Technology



EPC Contractor:

- Refinery and Petrochemical
- Steel Making and Mining
- Power Plants

Kara Sazeh Kimia Co.

ABOUT US

- **Kara Group was established in 1989.**
- **Kara SazehKimia was established in 2002, as a member of Kara Group.**
- **Privet company.**
- **Registered as a Knowledge-Based Group.**
- **More than 3 decades of experience in the field of heavy duty machine manufacturing.**
- **450 employees.**
- **Shop Area: 20,000 m²; Manufacture Area: 45,000 m².**
- **More than 300 industrial machines has been designed and manufactured.**

KARA GROUP



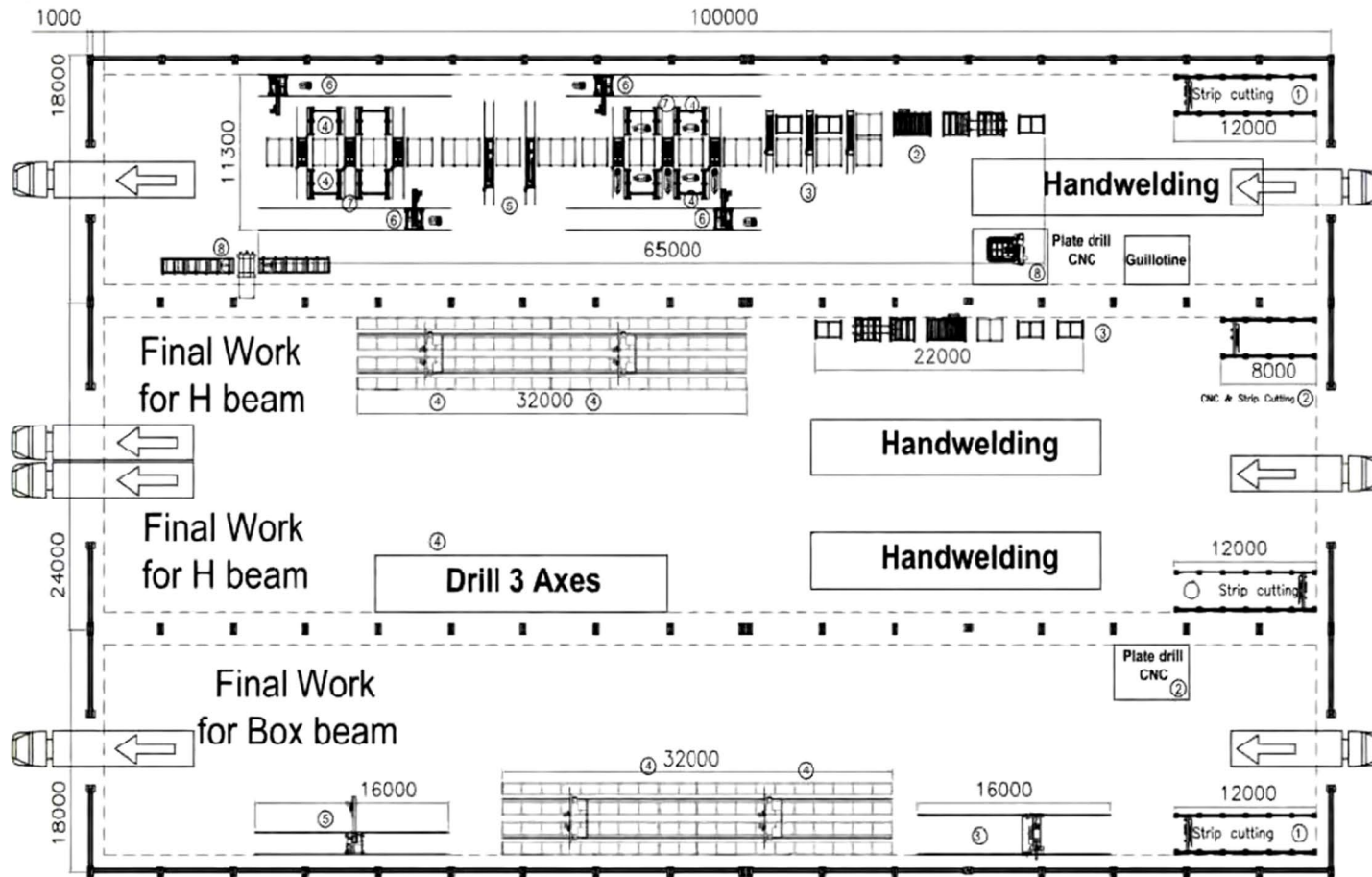
KARA WELDING & CUTTING COMPANY

Since 1989

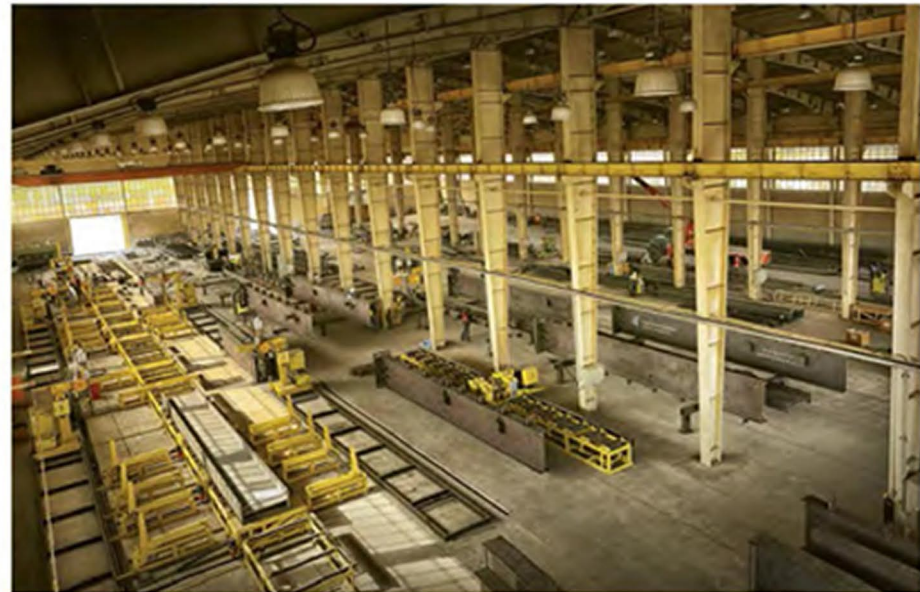
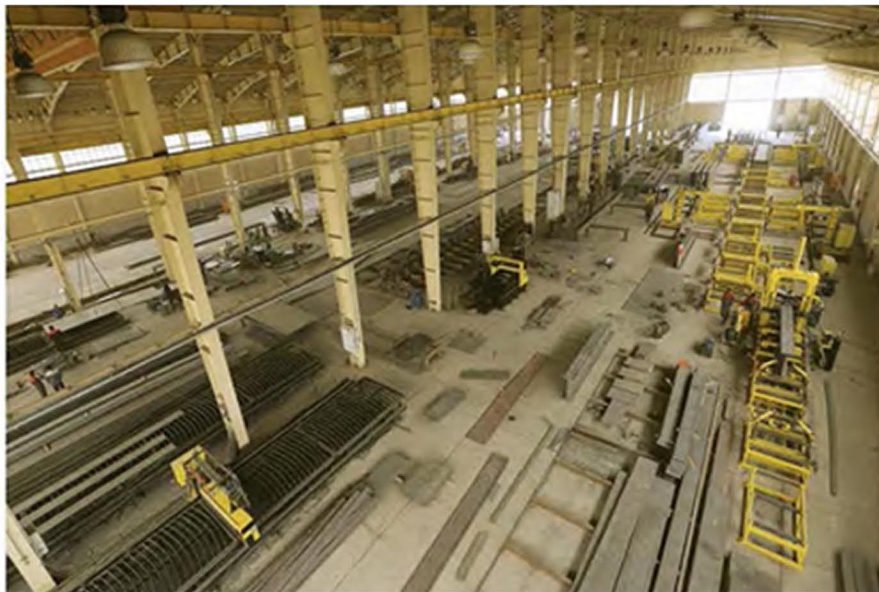
Design and manufacturing of Welding, Cutting, and Drilling machines and technologies



FROM DESIGN



TO CONSTRUCTION AS A TURN KEY SOLUTION

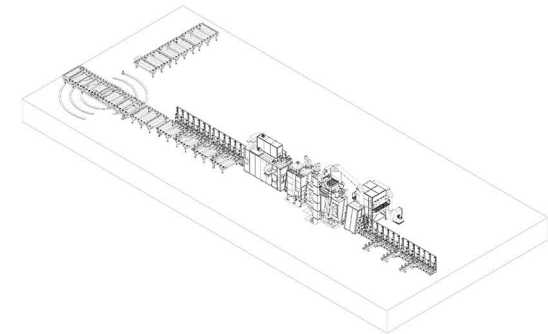


KARA SHOT & PAINT & DRYING LINE - Arvandan



KARA SHOT & PAINT & DRYING LINE - Arvandan:

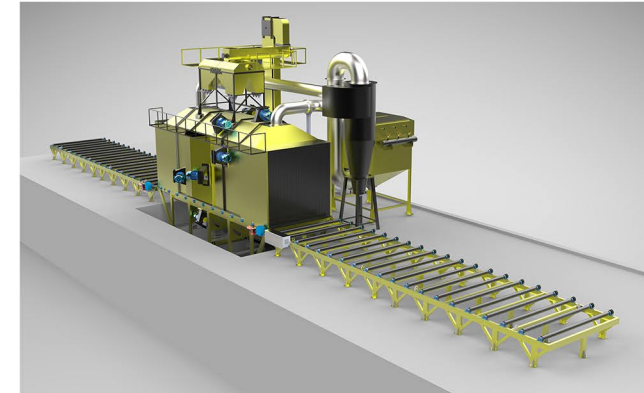
The set of these machines is used for shot blasting and painting a steel sheet for the initial preparation of its warehouse.



This line is approximately 64 meters long and 10 meters wide, which includes the primary sheet heater, shot blasting, coloring and sheet dryer.

There is also a 22 - meter - long rotary table transfer system (12 rotary tables & 10-meter fixed tables) in the continuation of this line.

KARA SHOT BLASTING MACHINE

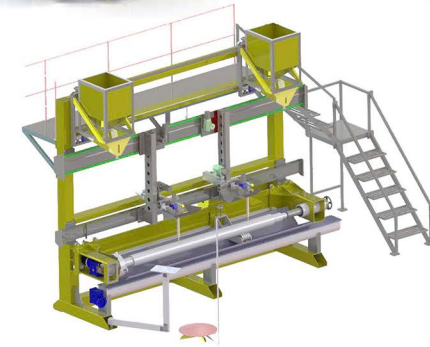
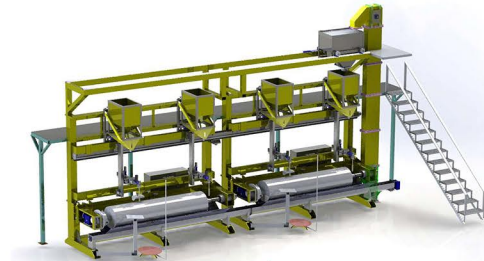
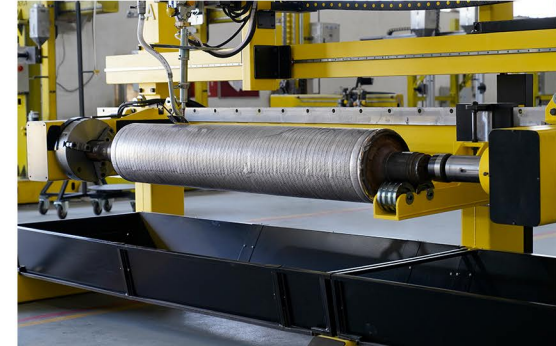


Working Method at the Shot Blast Machines:

In these machines, steel bullets (shot-shot) after entering the centrifugal turbines of the device are accelerated and sprayed on the surface of the part, which due to these high-speed and consecutive collisions of the bullets, shooting operations are performed in these devices.

Shot blasts are commonly used in industrial work and high-volume parts, as well as on large flat surfaces such as ship hulls and hall floors, and in a few cases in decorative work - antiquities and framing.

KARA SHOT BLASTING MACHINE



KARA CNC PLATE DRILLING MACHINE

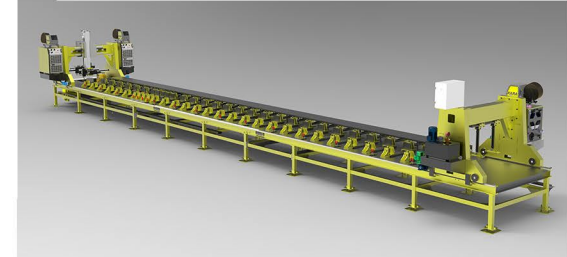


KARA CNC PLATE DRILLING MACHINE:

In the continuous effort we have added plate drilling machine for catering to our already established customers in the Beam fabrication and other steel fabrication industry. Not only in Fabrication Industry, the machine is also offering plate drilling solutions to the Boiler (Heat Ex-changer) industry, Water Purification industry, ship building industry & many such industries, catering to their respective plate drilling needs.

We do have range of products from a simple plate drilling system to Beam drilling machine.

KARA TRAILER BEAM WELDER



KARA TRAILER BEAM WELDER:

The KARA Welding Frame Welding Machine is designed for the truck chassis' and for the bar joists with different types and sizes. The system is comprised of the chassis - fastening fixture (table), chassis press apparatus (the centering connector) and the chassis welding apparatus (welding connector).

The welding area tracking of the system is made possible by a mechanical tracking system.

Thanks to the Frame Welding Machine, a single operator may track a dual sided welding at the same time and the result is a high-quality welding. According to the client requirements, submerged arc welding or gas metal arc welding methods can be utilized.

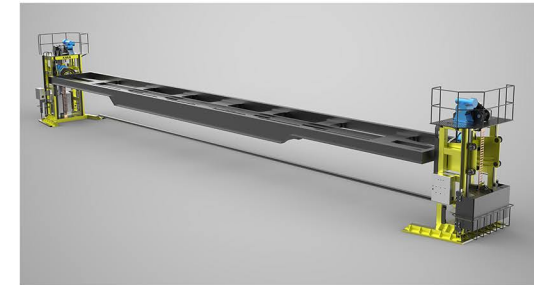
KARA DISH CLADING MACHINE



KARA DISH CLADING MACHINE:

This machine contains of boom & Column, positioner 0-90° and strip cladding head that: Boom & Column is a special machine, which can weld the metal vessels, steel construction in all orientation by various welding methods such as circumferential and longitudinal welding line. Free standing base or motorized travel carriage can be picked by the user according to their requirements. By mounting different welding system, such as sub arc welding, TIG, MIG, SAW etc, the user can achieve fully automatic welding functions, which not only provide perfect welding solutions but also save labor and time.

KARA HEAD & TAILSTOCK WELDING POSITIONER



KARA HEAD AND TAILSTOCK WELDING POSITIONER

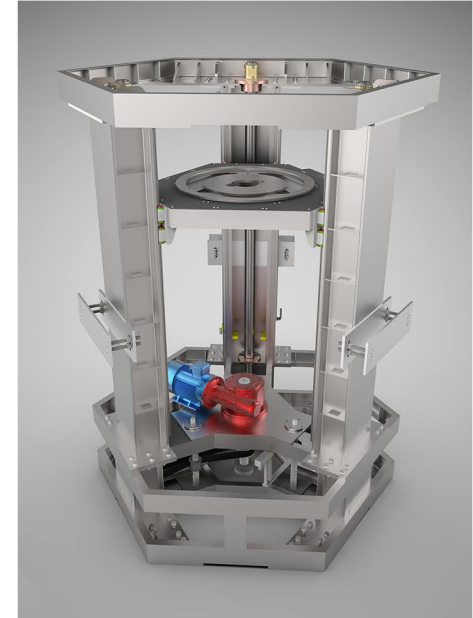
Designed for the assembly, material handling and welding applications industries, Headstock & Tailstock elevating and tilt work positioners can be customized to fit your facility's requirements including fixed - fixed, fixed - adjustable, fixed - mobile, and fully portable positioner options.

KARA VERTICAL ASSEMBLY ELEVATOR MACHINE

KARA

VERTICAL ASSEMBLY ELEVATOR MACHINE:

This machine is designed for the vertical movement of cylindrical workpieces weighing up to 12 tons. Its driving system is an electromotor gearbox connected to three vertical leadscrews, and it moves the working platform of the machine. The central platform is connected to the leadscrews by the screw nuts, and the rotation of the leadscrews causes the linear movement of the platform. This power transmission system and the electromotor gearbox, is installed at the end of the machine chassis. The central shaft of electromotor gearbox connects to each of the leadscrews by pulleys and timing belts. using of the timing belt increases the accuracy of the movement and synchronizes the rotation of all three axes, as well as alignment of the linear movement of platform. Therefore, the linear movement and up and down of the workpiece in its movement course is done without any slip along the horizon, which is the main advantage for this machine.



KARA CNC CUTTING MACHINE



KARA CNC CUTTING MACHINE:

When beveling is your business, precision and accuracy are the two main factors that determine the quality of your finished products. Bevel cutting requires in-depth knowledge of bevel machines, cutting processes, and the sequential order of cutting corners, lead-ins, and run-outs. Your operating team must ensure that every angle and edging calculation is executed to perfection. We're experts in plasma bevel cutting and can guide you through the process of choosing the right machine for your business. Our unrivaled expertise and quality equipment can help you become an industry leader.

KARA LONGITUDINAL SEAM WELDER MACHINE



KARA LONGITUDINAL SEAM WELDER MACHINE:

Longitudinal seam welding is a process in which a piece of sheet metal that is fully rolled is welded along the seam of its two ends. welding process could be either MIG_MAG or TIG depending to the customer order.

This process easily enables the joining of two flat plates of material together to form a cylinder. Longitudinal seam welding can be used on smooth plates, sheets, pipes, and tank sections to make cylindrical workpieces.

Seam welder machines in KARA Group company are manufactured in three different sizes.

KARA SHEET PROCESSING MACHINE



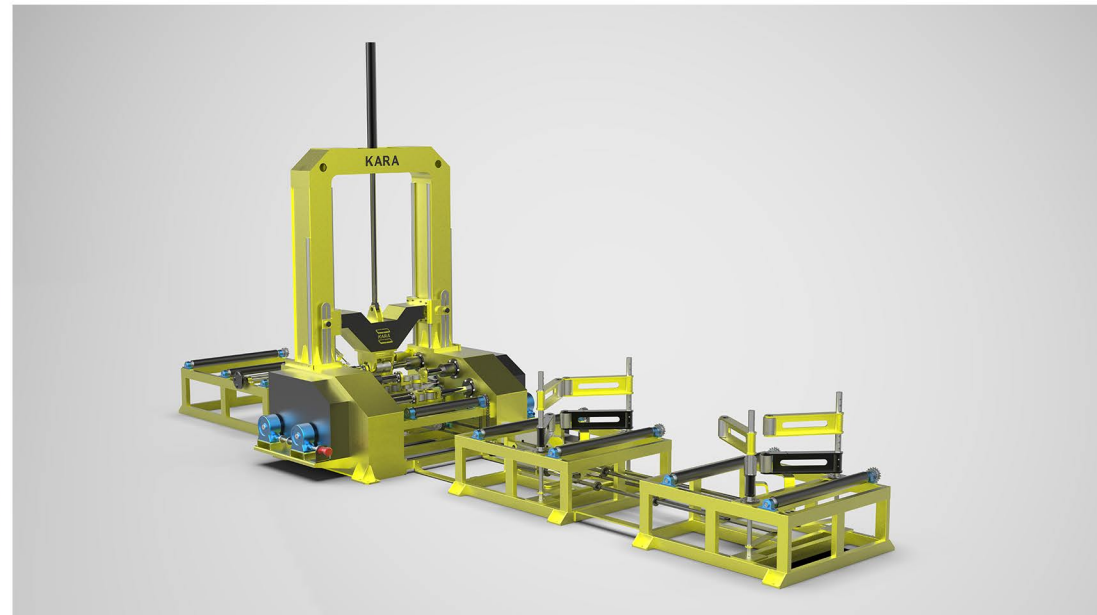
KARA SHEET PROCESSING MACHINE:

KARA sheet metal processing in portal design is suitable for the economical processing of steel sheets in steel construction, steel trade and plant engineering.

This used plate processing is designed for automatic thermal cutting, high-performance drilling, milling, thread cutting and scribing for large steel plates and sheet metal panels.

The very stable machine with the attached thermal cutting system and the high-performance drilling unit over the flame cutting table on which the sheet metal plates to be processed are placed.

KARA H BEAM ASSEMBLY



KARA H BEAM ASSEMBLY:

KARA is a professional manufacturer and supplier of H beam assembling machines with affordable price. The H beam assembling machines are high performance machines to execute the tack welding / spot welding to assembling the 2 flanges and 1 web in H shape with CO2/MAG welding technology.

For all the H beam assembling machines that manufactured by Kara are Equipped with input roller table, output roller table, Hydraulic station.

KARA SAZEH KIMIA COMPANY

Since 2002

Design, Manufacturing and Erection of Equipment's for Mining, Steel Making, Oil, Gas, and Petroleum.

KARA
GROUP


KARA
WELDING & CUTTING EQUIPMENT

KARA
TECHNOLOGY

KARA SAZEH KIMIA

The billboard features the word 'KARA' in large, bold, yellow-outlined letters. Below it, the word 'GROUP' is written in a smaller, yellow, sans-serif font. At the bottom of the billboard, there are four distinct logos and their corresponding company names: 1) A stylized yellow 'KARA' logo with the text 'WELDING & CUTTING EQUIPMENT' below it. 2) A yellow winged logo with the text 'KARA TRADING' below it. 3) A yellow 'KARA' logo with the text 'TECHNOLOGY' below it. 4) A yellow circular logo with a cross-like symbol inside, with the text 'KARA SAZEH KIMIA' below it.





Kara Sazeh Kimia's
Fields of Activities

Fields of Activities

- Steel Making
- Power Plants
- Petrochemical Industries
- Oil Refining
- Mining and Cement



www.karakimia.com



PRODUCTS & SERVICES

Heavy Duty Special Machines

Pressure vessels and Storage Tanks

Heat Exchangers and Boiler

Cladding and Overlay

Automated Warehouse

Packaging and Finishing Lines

Cranes

Kind of Heads

Client: Butia Iranian Co.

Main Products (01): Cooling Gas Quench Tower

Diameter (mm): 4100

Length (mm): 19300

Weight (ton): 52

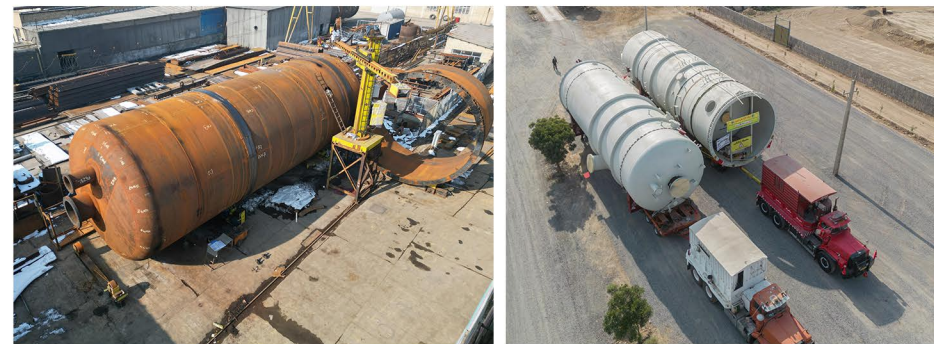
Main Products (02): Reformed Gas Quench Tower

Diameter (mm): 6200

Length (mm): 21600

Weight (ton): 40

Description: Engineering, Procurement, Fabrications and delivery





Client: Butia Iranian Co.

Main Products (03): Process Gas KO Drum

Diameter (mm): 5000

Length (mm): 11000

Weight (ton): 40

Description: Engineering, Procurement, Fabrications and delivery



KSK Projects:

Direct Reduction Project of Eqlidand Ardebil Steel Co.



Client: IRITEC

Main Products: Purge Gas Tank

Diameter (mm): 5000

Length (mm): 17000

Weight: 75 ton each

QTY: 4 set

Description: Engineering, Procurement and construction



Client: Shazand Petrochemical Co.

Main Products: Tower
Diameter (mm): 2000
Length (mm): 27500
Weight: 17 ton
QTY: 1 set

Description: Engineering, Procurement, Construction,
delivery and installation





Client:
Iranian Central Oil Fields Co.

Weight (Ton): 800

Main Products: HP Separator

Weight (Ton): 250

Thickness: 145 mm

Test Pressure: 250 bar

Description: Engineering, Procurement and construction

KSK Projects:

Arak Refinery Expansion (HC Flare K.O Drum)



Client:
SazehConsultants Co.

Weight: 142 (Ton)
Length: 32500 (mm)
Diameter: 6800 (mm)
Thickness: 18 (mm)

Scope: Engineering, Procurement and construction

KSK Projects:

3000 ton per day Mixer Cassette

Client: Hegmatan Sugar Factory

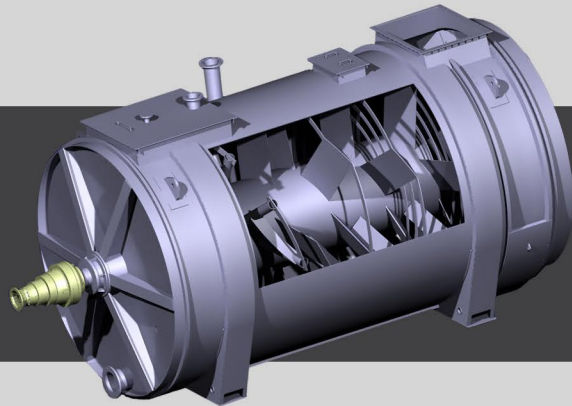
Weight: 50 (Ton)

Length: 10000 (mm)

Diameter: 4400(mm)

Thickness: 34 (mm)

QTY: 1 set



Scope: Calculation and design, Modeling, Fabrication and delivery



KSK Projects:

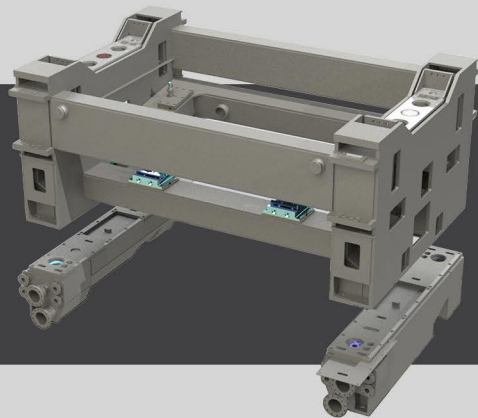
CCM Mold Oscillator Machine

Client:
Esfahan's Mobarakeh Steel Co.

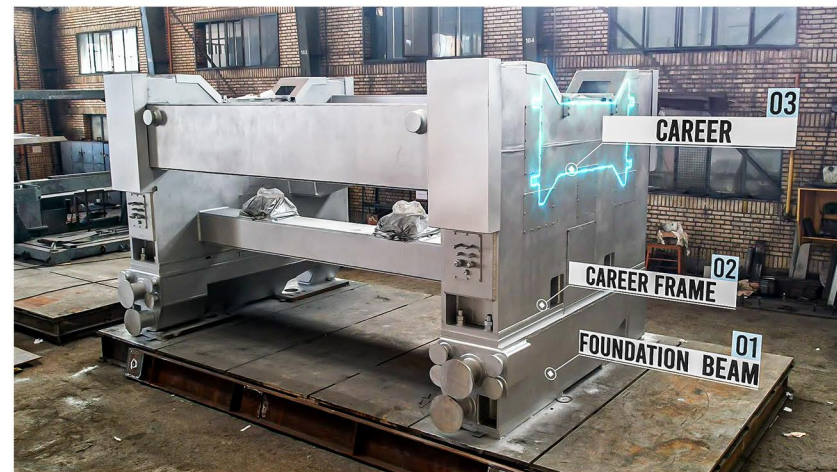
Weight: 72 Ton (36 ton per set)

QTY: 2 sets

Parts: Body, Hydraulic Drives and Suspensions



Scope: Engineering, Procurement, Fabrication

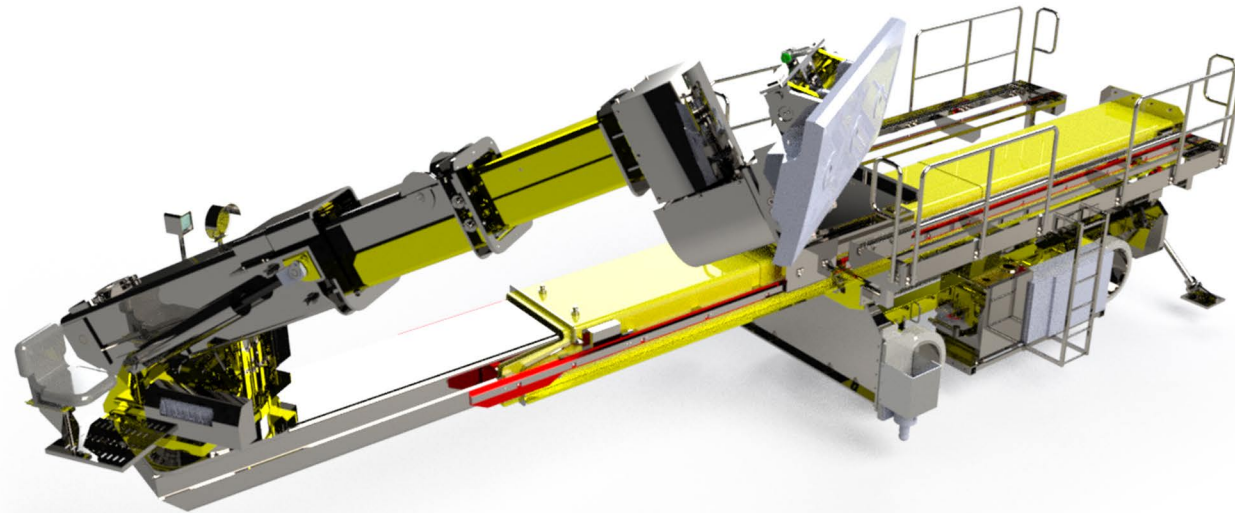


Client:
Saba Foolad Co. (SFC)

Weight: 3 Ton
QTY: 1 sets



Scope: R&D, Engineering, Procurement, Fabrication, Assembly, Commissioning and Training



Client: Opal Parsian

Client: Opal Parsian

Weight: 30 Ton

QTY: 1 sets

Parts: Turn Key Solution

Scope: R&D, Engineering, Procurement, Fabrication,
Assembly, Commissioning and Training.



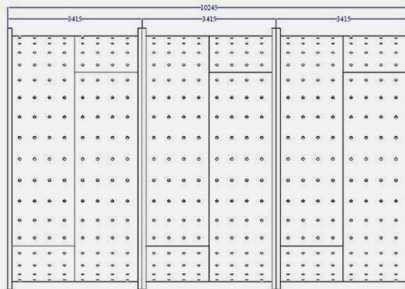
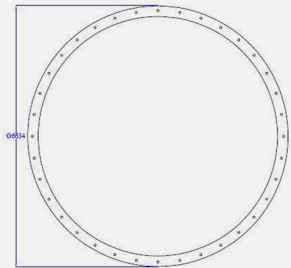
Client: Opal Parsian

Length: 10,245 mm

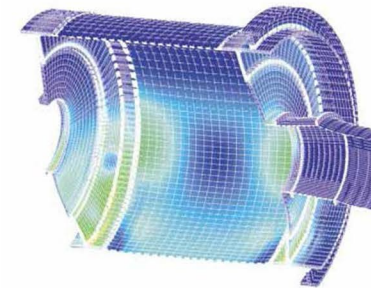
OD: 6,634 mm

Weight: 250 Ton

QTY: 1 Set



Scope: R&D; Engineering; Procurement; Fabrication; Monitoring





Client: ISOICO

Weight (Ton): 800

Capacity: 35 Ton, 60 Ton, 160 Tons.

Technology provider: KLANBAU, Germany

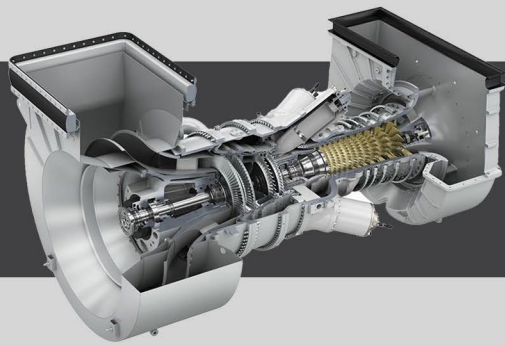
Parts: Bogie, Column, Jib System, Lower Part of Gantry, Gantry Girder

Description: Engineering, Procurement and construction



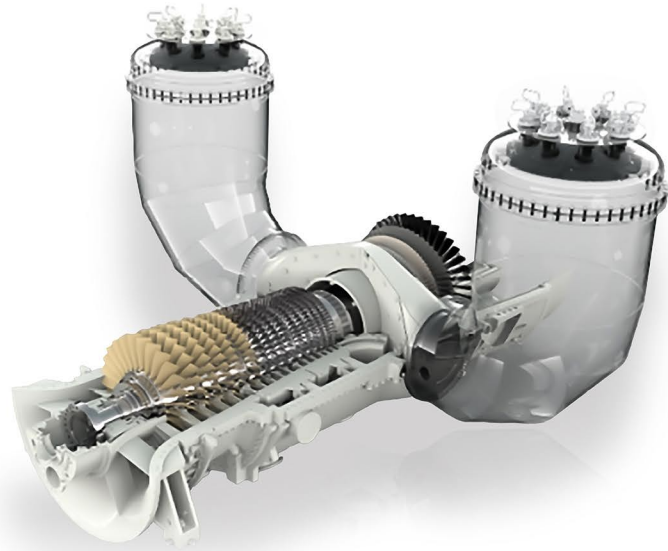
Client:
**Middle-East Industrial Gas Turbines
(M.I.G.T) Company**

Design Cooperator: Siemens Co.
QTY: 40 Unit



Scope: Fabrication, Heat treatment, Machining, Insulation, Painting and NDT





Client:
**MAPNA Turbine Engineering
& Manufacturing Co. (TUGA)**

QTY: 8 Unit

Fabrication, Heat treatment, Machining, Painting and NDT

Parts: Outer shell, Mixing chamber, Top dome, Manhole cover, Adaptor ring frame, Flame tube, and Oil pan.





Kara Knowledge Enterprise Industries Group



Kara Sazeh Kimia Co.



Welding & Cutting Equipment



KARA Technology

Thank You

For Your Attention

www.KaraSazeh.com